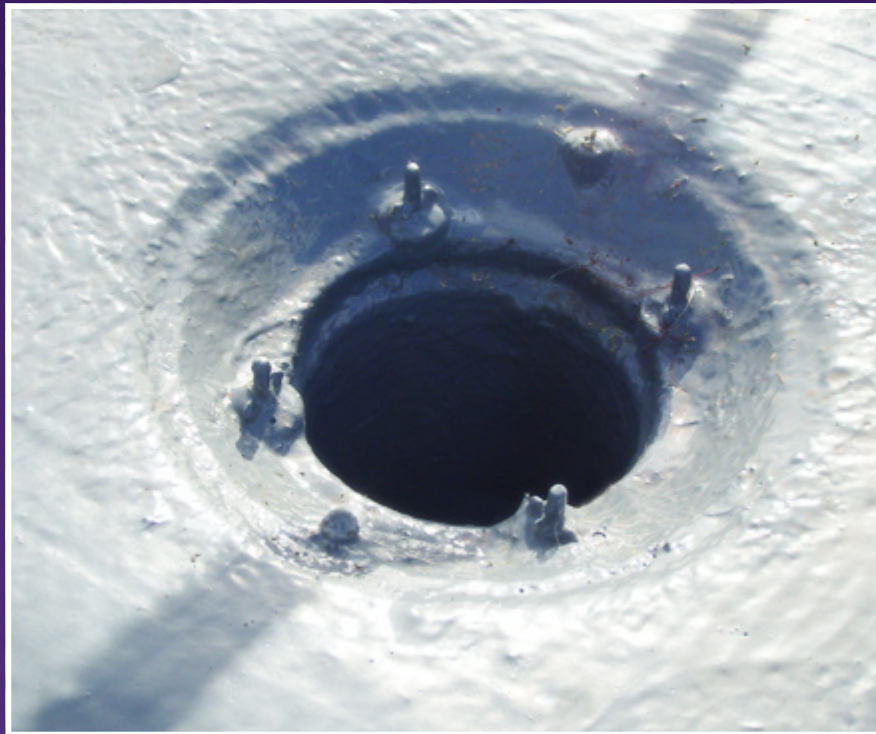




Project: Marks and Spencer

Location: Isle of Wight



McConnell Roofing have been successfully carrying out weatherproofing for Marks and Spencer for nearly 20 years, and have worked on around 70 or 80 stores on a national basis, mainly on their High Street portfolio of buildings.

Around 20 years ago, M&S began to open up “Out of Town” stores, which were generally much much bigger than their High Street counterparts.

The design of these were, as you might expect very similar to each other, and the roofs were almost exclusively made with a steel deck, PU insulation board and a Single Ply membrane.

Fast forward nearly 20 years and many of these membranes are reaching the end of their life as the membranes lose elasticity, fixings loosen and flashings begin to fail.

McConnell’s have been applying Reinforced Liquid membranes directly on to PVC membranes for some years now as a useful and sometimes necessary alternative to Stripping the existing roof and starting over.

After extensive “Adhesion Tests” to ensure a bond (this would involve laying samples of different primers as well as the material direct and then some weeks later doing a “peel-off” test to see which sample has the best bond), the roof is ‘Overlaid’ which suits perfectly their needs as many of their properties have a large number of items of plant, condensers, AHU’s, Extracts and pipe work.